

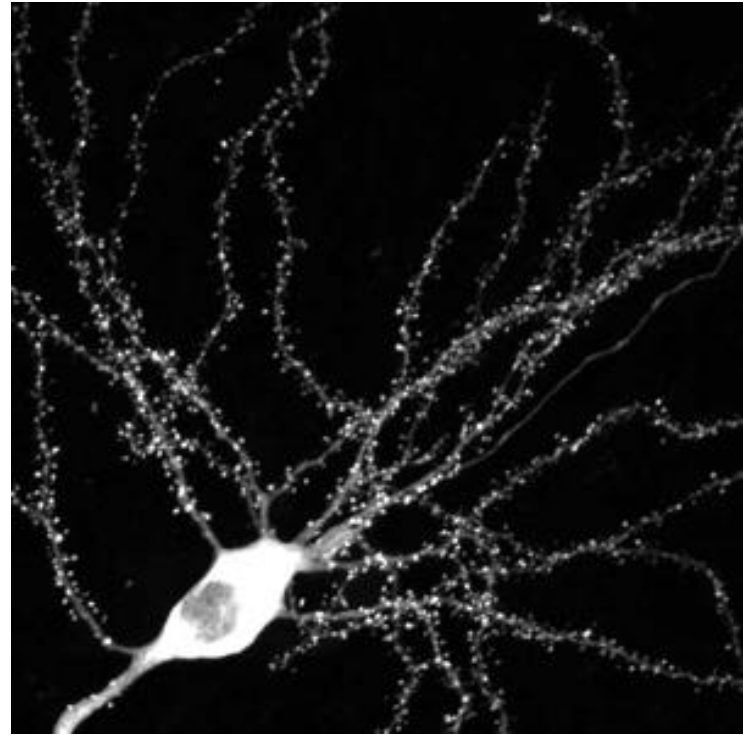
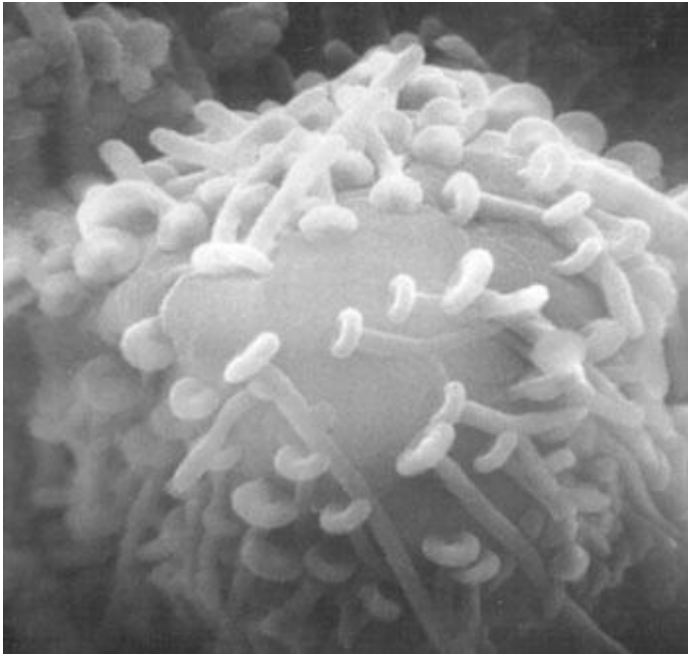
Curs 3

1. Sinapsele in SNC
2. Integrarea sinaptica
3. Modularea sinaptica
4. Fiziologia analizatorilor

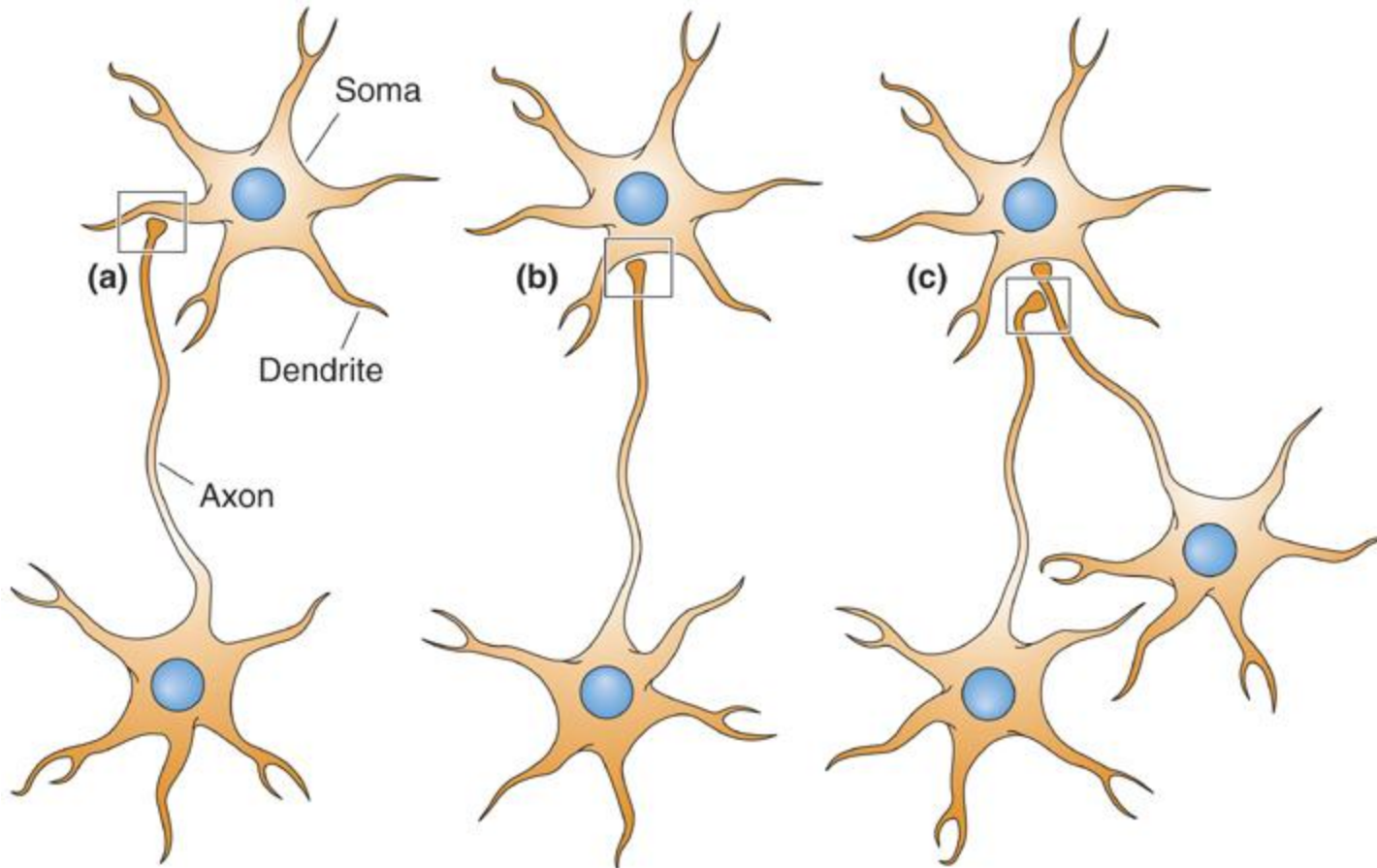
Sinapsele in SNC



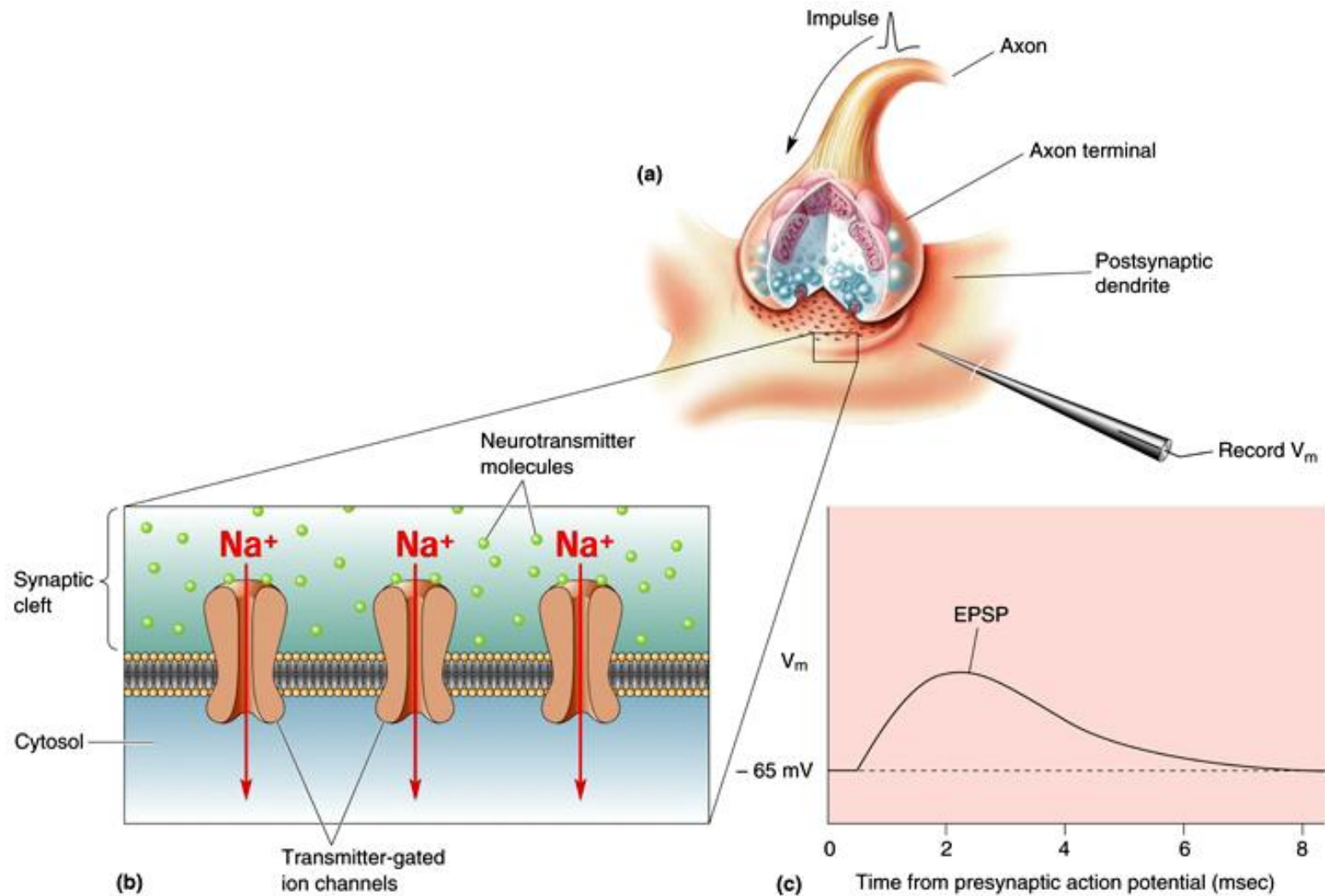
Diferențe între placa motorie și sinapsele din SNC



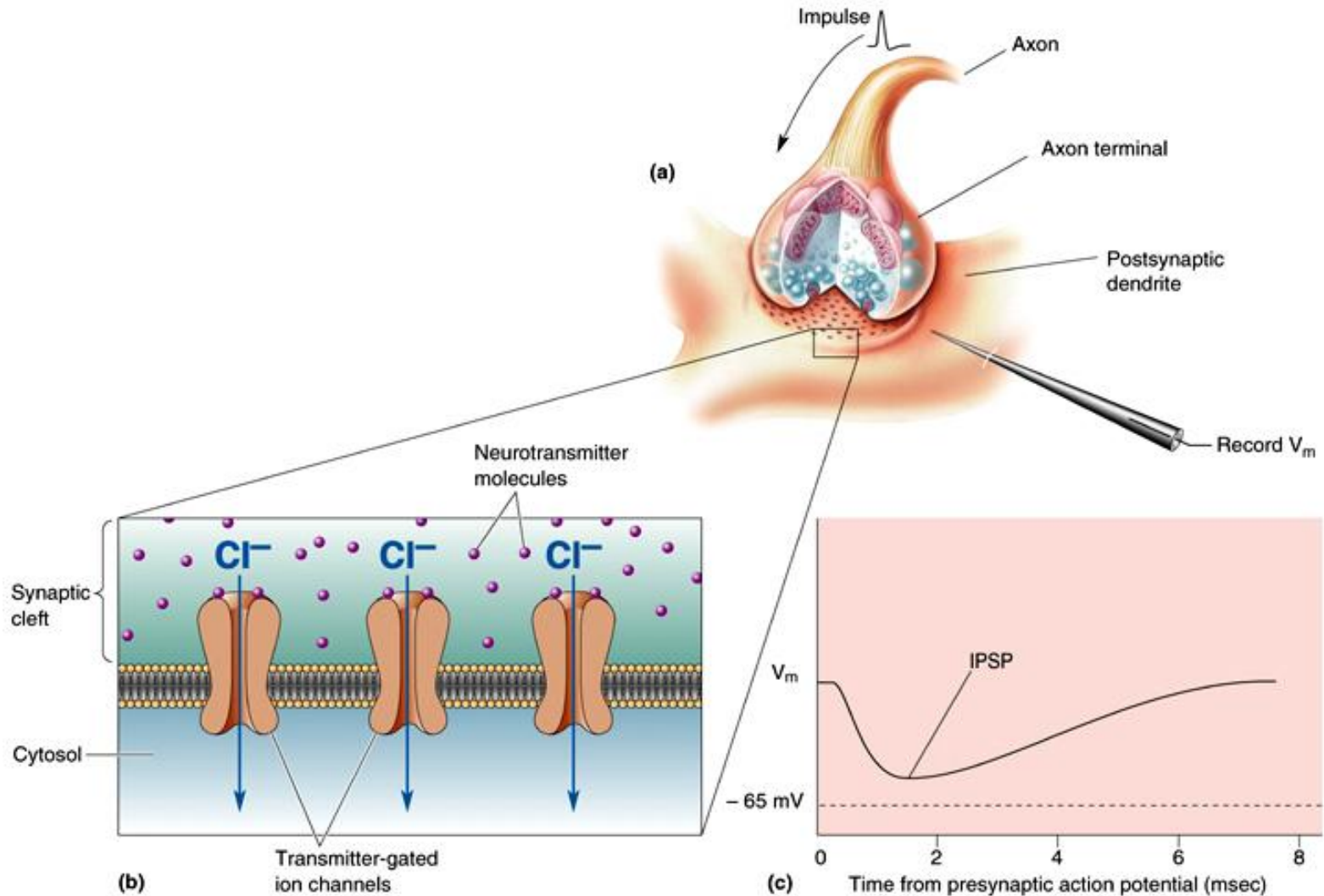
Tipuri de sinapse neuro-neuronale



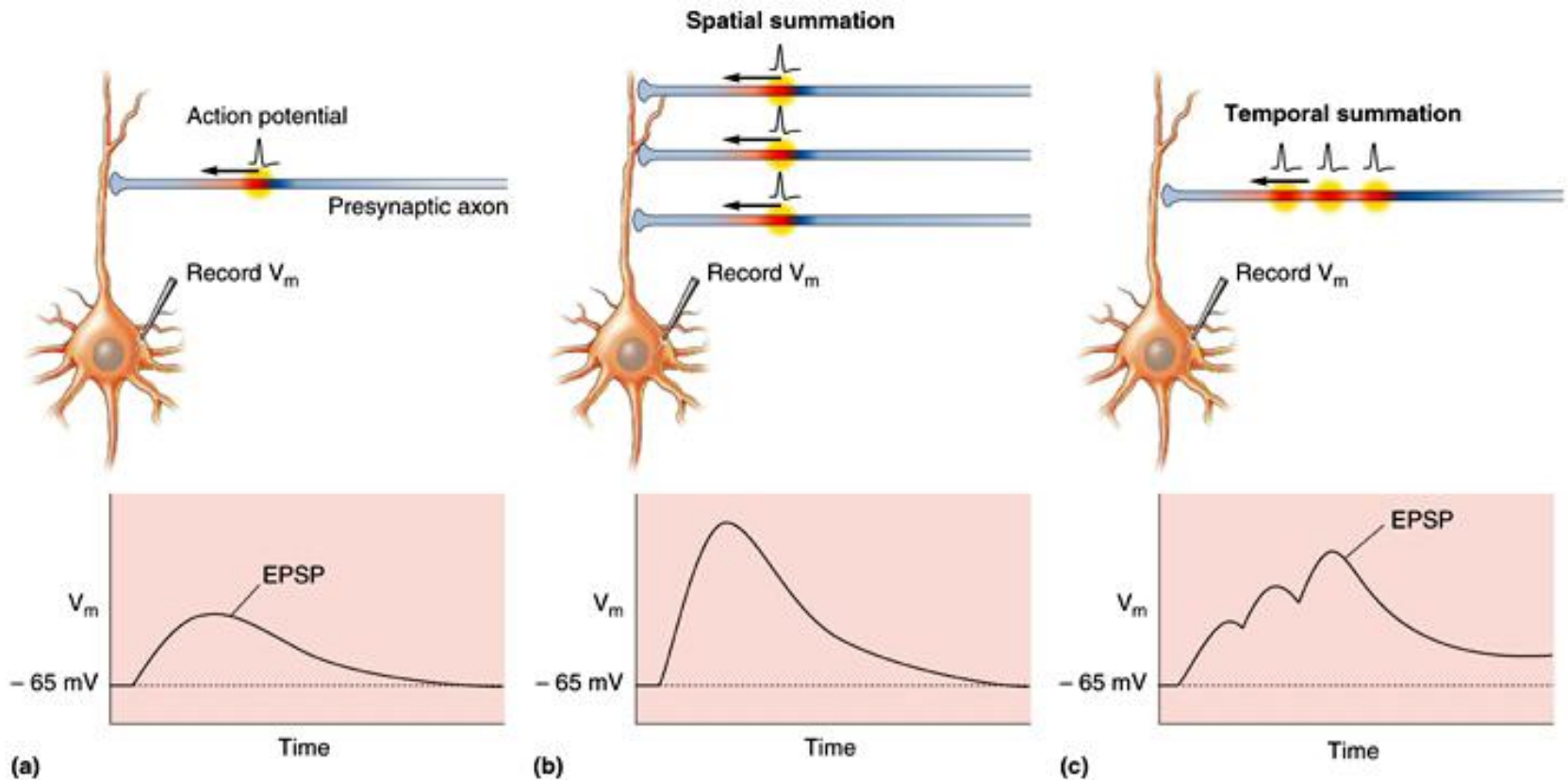
Sinapse excitatoare în SNC



Sinapse inhibitoare în SNC



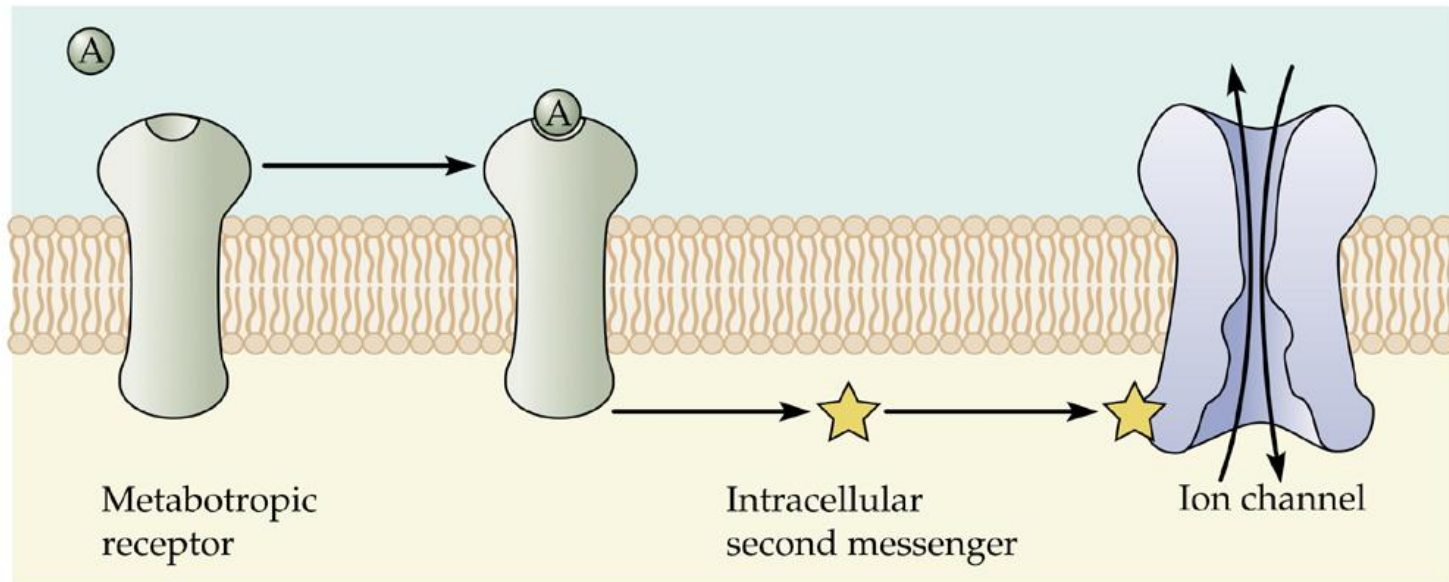
Integrarea sinaptica – sumarea spatiala si temporală



II. Modularea sinaptică

Transmiterea sinaptică lentă – modularea sinaptică

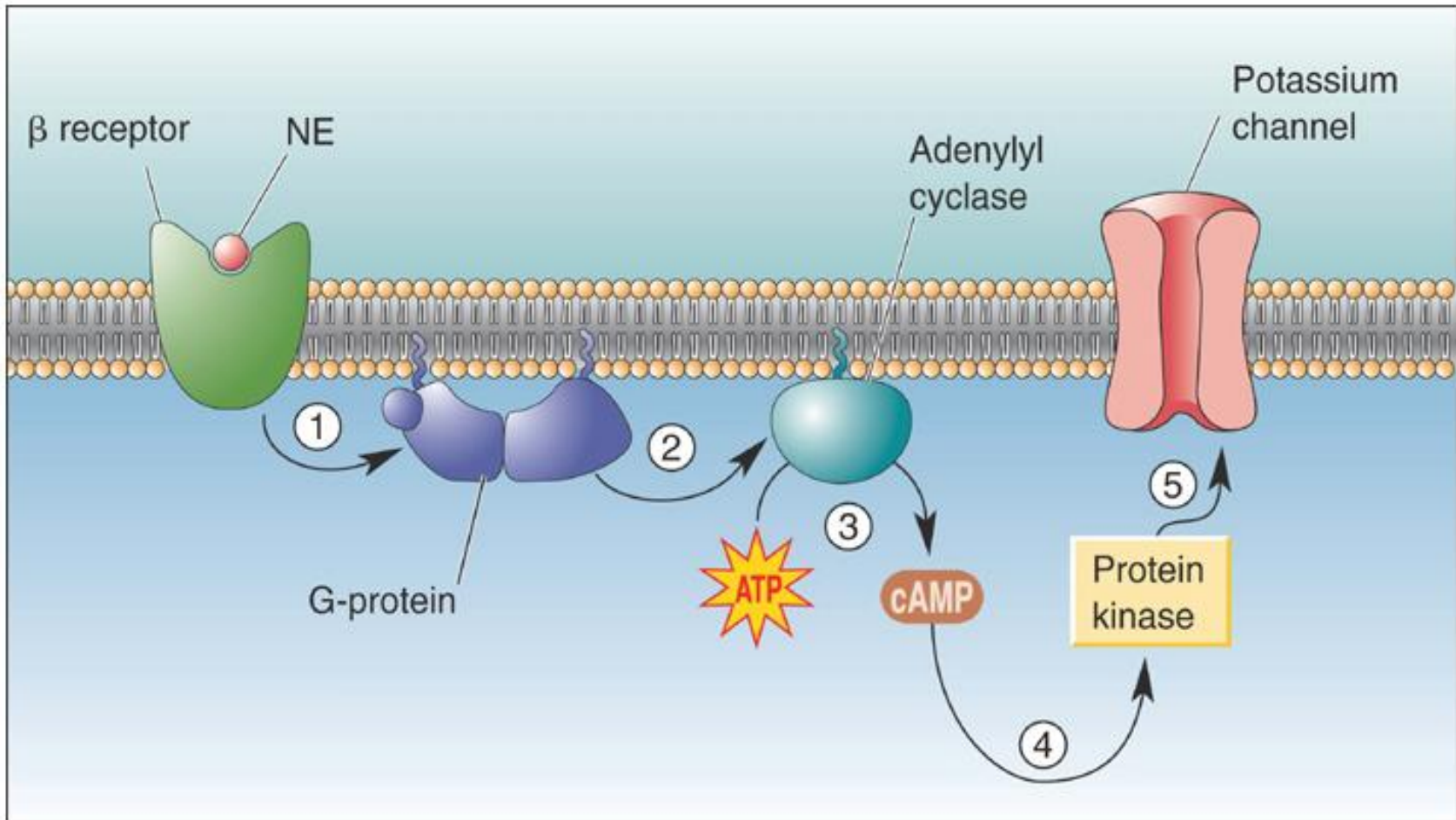
(B) Indirect transmitter action



© 2001 Sinauer Associates, Inc.

-receptori metabotropi – nu sunt canale ionice; activează căi de semnalizare intracelulare asociate cu sinteza unui mesager secundar

Transmiterea sinaptică lentă – cale de semnalizare



Activarea subunitatii α - declansarea unei cascade de semnalizare

